

13 - Dutton Street, Hawthorne – Comment on Trial LED Luminaires

Luminaire

It is assumed this luminaire is a - Sylvania Street LED.

Colour

This is a harsh white light, assumed to be 4000K, that is unnecessary in this residential street.

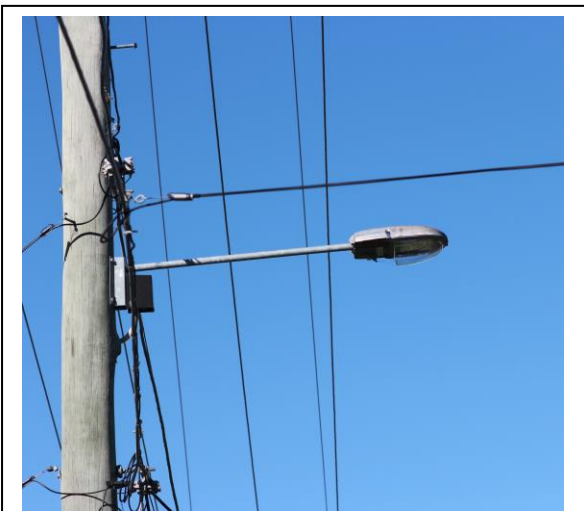
Brightness

This is a very bright and glary luminaire that is uncomfortable for pedestrians. This luminaire provides significantly greater illumination than in surrounding streets and may exceed the minimum Australian Standard.

Glare

This is an intensely glary luminaire as it appears to have no shielding of the LED array. The Type 4 design delivers excessive and unnecessary illumination into the glare zone and may cause discomfort to pedestrians. Pedestrians walking under this luminaire at night were observed walking along the roadway rather than along the footpath. Glare could be causing pedestrians to seek the surer footing of the roadway rather than the footpath.

Installation



Most luminaires are installed with an up-tilt angle of around 5°.

While one luminaire appeared to be installed horizontal the majority had an up-tilt angle of up to about 5°. The luminaire does not appear to have any internal ability to adjust the installation angle to horizontal.

Light Distribution

Even with a slight up-tilt angle this luminaire still delivers significant rear light trespass.



This luminaire is intensely glary and projects trespass light to the rear.



Overall Assessment as a LED Luminaire for Brisbane-wide Roll-out

This luminaire incorporates no shielding of the LED array and is too glary for residential streets. It's angle of installation cannot be easily adjusted to horizontal. It creates a light trespass problem to the rear. This luminaire is not suitable for Brisbane-wide roll-out.