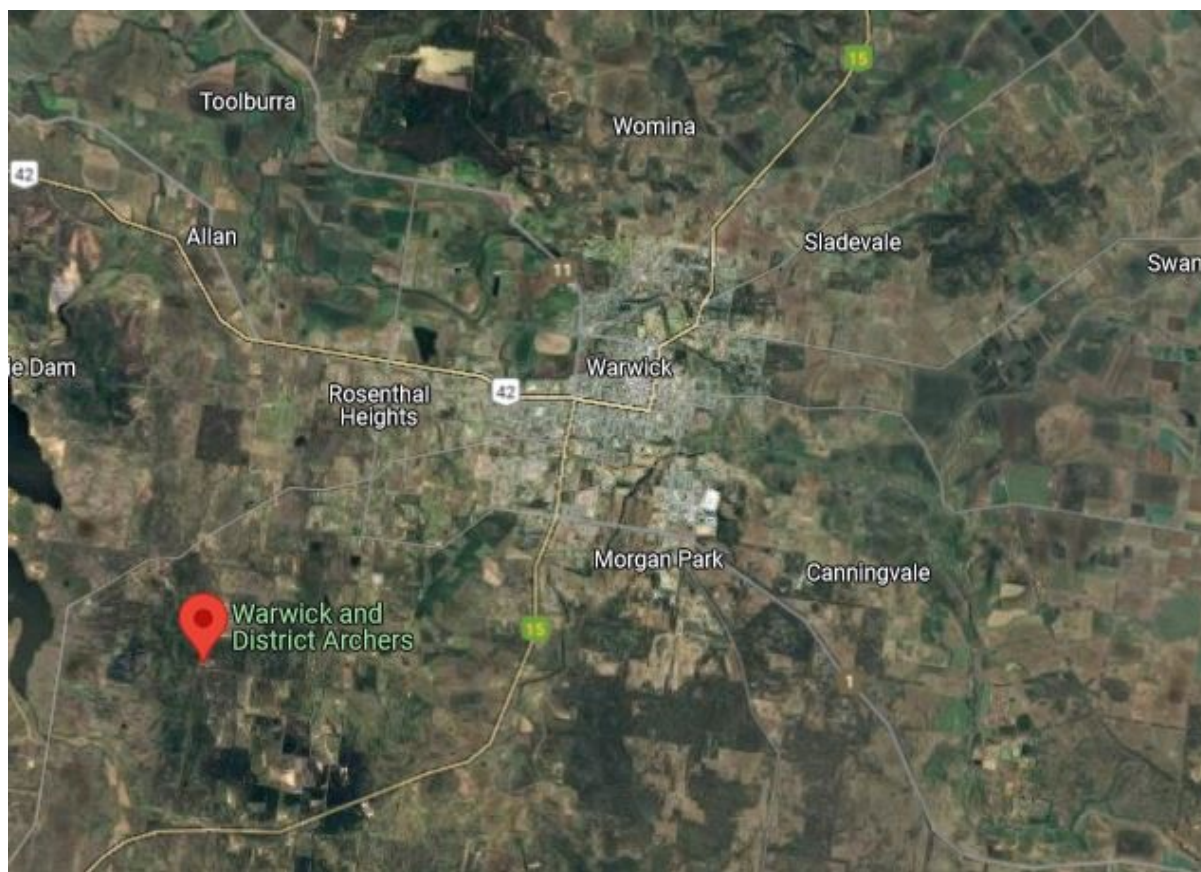


Warwick & District Archers – BAS Dark-Sky Site

At the invitation of the Warwick and District Archers (WDA), BAS can now utilise the archer's Ford Road site and facilities for astronomy nights. In addition, in mid-2024 the Southern Downs Regional Council, owner of the 45ha site, added BAS to the lease WDA has for the site. This allows BAS to proceed with developing facilities to support astronomy and our visiting members.

The site is a 15-minute drive south-west of Warwick. On the New England Highway heading south to Stanthorpe, turn right onto Glen Road at the Warwick Hospital, then after about 7km, turn left onto Ford Road. Or access from the New England Highway via Kingsleigh Road.



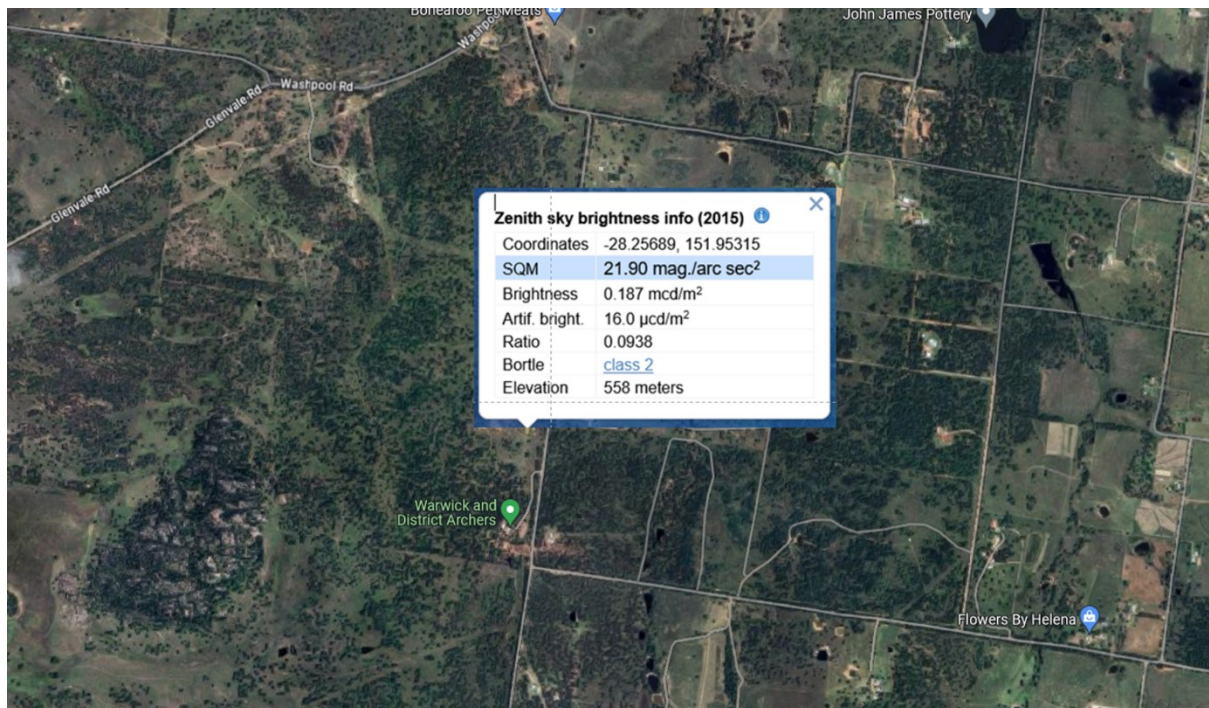
Google maps link: <https://maps.app.goo.gl/Ca91xUHiw9crQom77>

The Global Light Pollution Map <https://rb.gy/64141> classifies the Warwick Archers site as Bortle Class 2 with artificial light incidence of $16.0 \mu\text{cd}/\text{m}^2$. Our other main observing site at Calvert Aeromodellers is assessed as Class 3 with artificial light of $39.8 \mu\text{cd}/\text{m}^2$. The Maleny Golf Club site is Class 4 with artificial light of $64.7 \mu\text{cd}/\text{m}^2$.

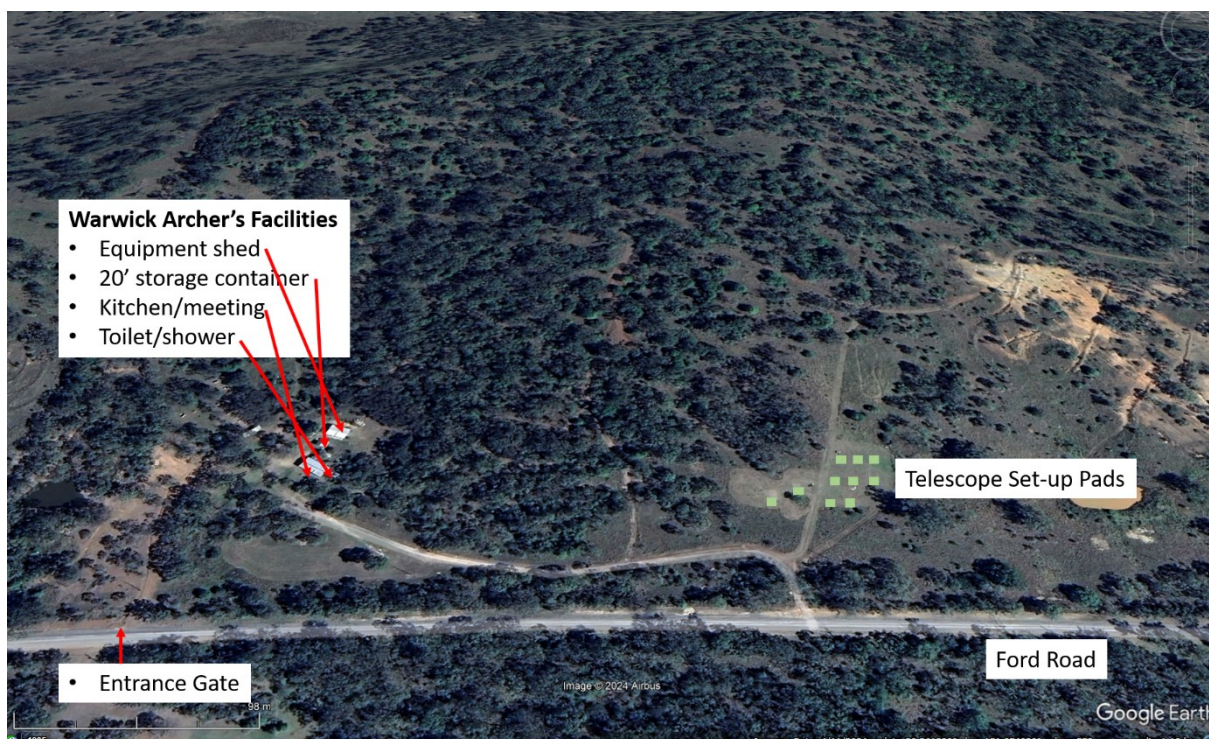
There is a very tolerable bubble of light to the east over Warwick, however the sky to the south, west, and even north towards Toowoomba, is very dark. The site is excellent for visual astronomy and astrophotography.

Due to the significant driving distance from Brisbane, BAS will aim to conduct multi-night weekends at the site, covering Friday, Saturday, and Sunday nights. BAS members are encouraged to utilise

these opportunities for some multi-night astronomy. Leaving your own camping gear in the on-site 20-foot shipping container between visits can make Warwick visits an easy option.



Warwick Archers - Global Light Pollution Map <https://rb.gy/64141>



The site is a large scrubby block with tank water, kitchen, toilet, shower, and camping area facilities at the southern end. The camping area is a large mown grassed area just below the main archer's facilities. There is plenty of room there for a dozen, or more, campers.



Warwick Archers have slashed a large area, suitable for telescope setup, towards the northern end of the block. BAS has created about 12 gravelled and levelled telescope setup pads. Seven of the pads have tennis court matting material to make telescope setup and use more comfortable.



The Archers have a large kitchen pavilion area that is available to BAS. Members may setup overnight beds in this facility if they wish.

As of November 2024, the Archers facility does not have access to 240v power. However, WDA have secured grant money to connect 240V power and Ergon is expected to complete connection by early 2025. Until 240V power is connected, camping conditions on the site are a bit challenging. However, this will all change once power is connected.

Warwick Archers have also made available to BAS a 20-foot shipping container and two single beds. Members may leave their own camping gear in the container rather than transport for each visit. Members may also choose to sleep in the container on cold nights, or even in the kitchen pavilion area, or the large camp ground area.

BAS has booked specific New Moon weekend dates with Warwick Archers. However, our members may utilise the site on any day of the year, provided it does not clash with a larger archery event. Email the BAS President for permission to visit the site on non-BAS event dates.

The gate to the facility is normally locked. The access code can be provided upon request.



One of two single beds made available to BAS by Warwick Archers



Loo and shower facilities



A small section of the camping area

Warwick Archer's Facilities

- Equipment shed
- 20' storage container
- Kitchen/meeting
- Toilet/shower

Potential bunkhouse site

Telescope Set-up Pads

240V underground cable extension

SWER Power Line

SWER off take line

Camping Area

Ford Road

Image © 2024 Airbus

Google Earth

Imagery Date: 4/11/2024 Lat: 28.261339° Lon: 151.954028° elev: 552 m eye alt: 1.18 km