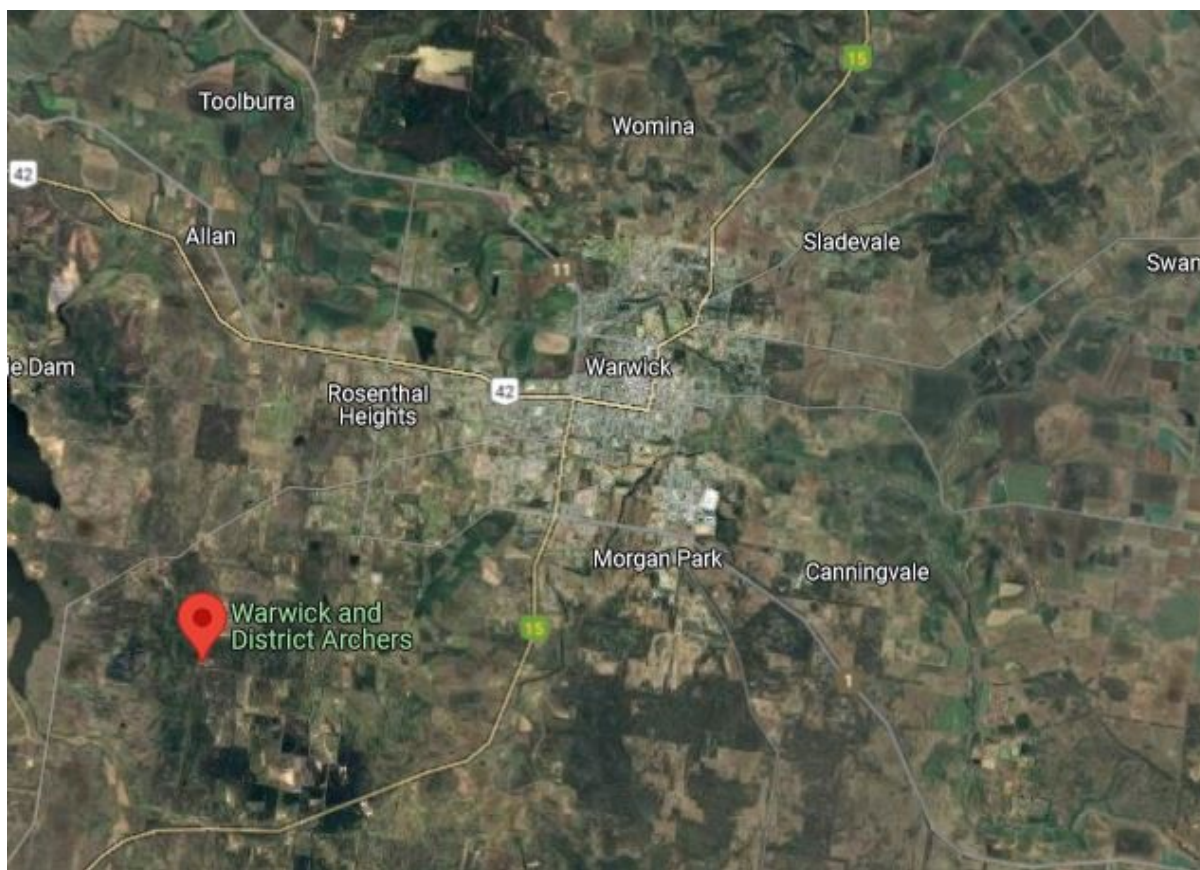


Warwick & District Archers – BAS Dark-Sky Site

The Warwick and District Archers <http://www.warwickarchers.websyte.com.au/> have very generously allowed BAS to utilise their Ford Road facility, south-west of Warwick, for our astronomy events.

The site is 15 minutes drive south-west of Warwick. On the New England Highway heading south to Stanthorpe, turn right onto Glen Road at the Warwick Hospital, then after about 7km, turn left onto Ford Road.

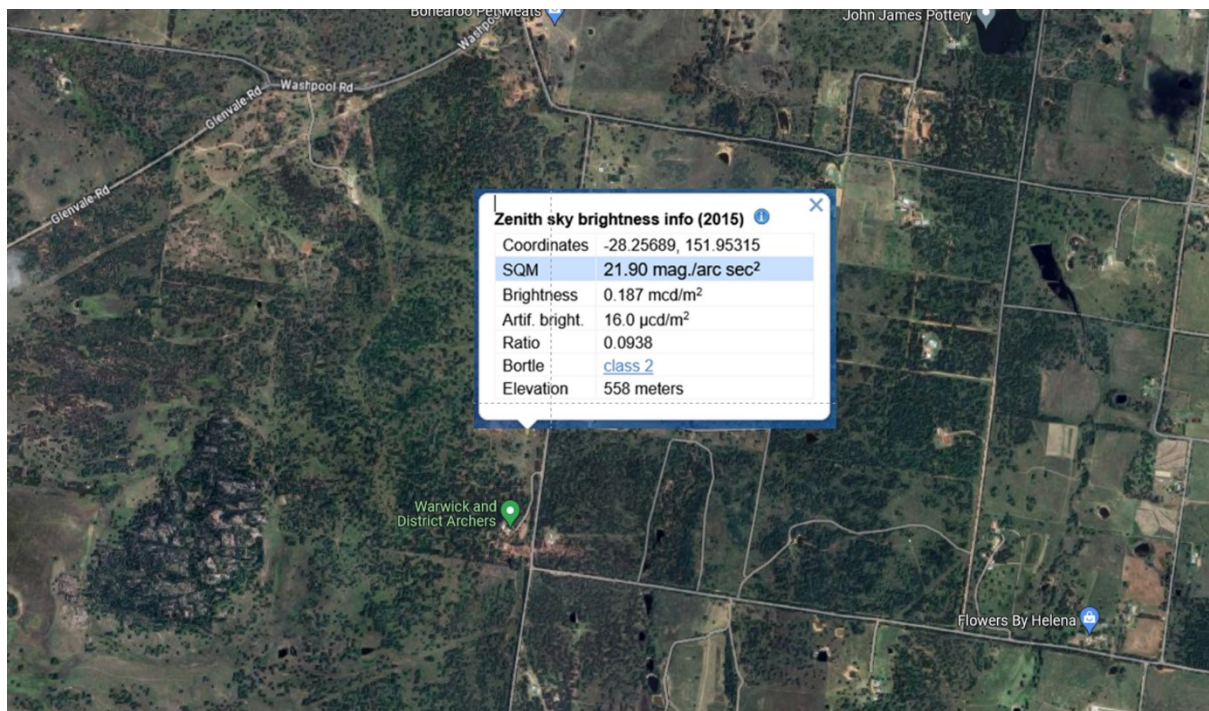


Google maps link: <https://maps.app.goo.gl/Ca91xUHiw9crQom77>

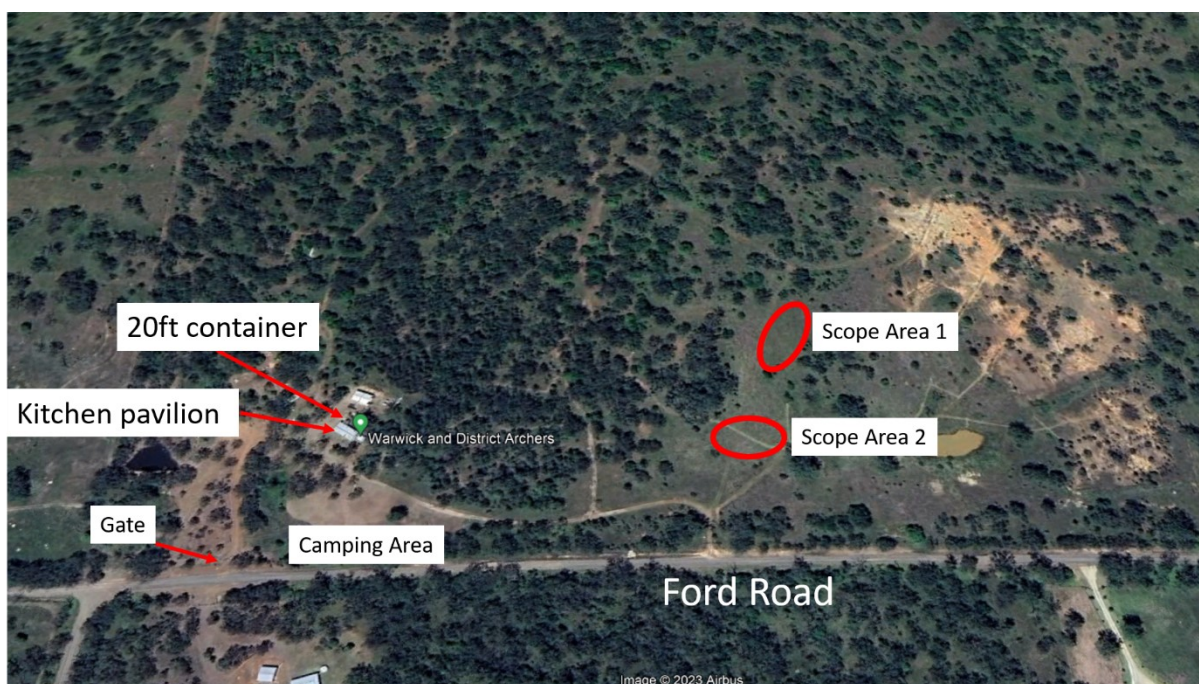
The Global Light Pollution Map <https://rb.gy/64141> classifies the Warwick Archers site as Bortle Class 2 with artificial light incidence of $16.0 \mu\text{cd}/\text{m}^2$. Our other main observing site at Calvert Aeromodellers is assessed as Class 3 with artificial light of $39.8 \mu\text{cd}/\text{m}^2$. The Maleny Golf Club site is Class 4 with artificial light of $64.7 \mu\text{cd}/\text{m}^2$.

There is a very tolerable bubble of light to the east over Warwick, however the sky to the south, west, and even north towards Toowoomba, is very dark. The site is excellent for visual astronomy and astrophotography.

Due to the significant driving distance from Brisbane, BAS will aim to conduct multi-night weekends at the site, covering Friday, Saturday, and Sunday nights. BAS members are encouraged to utilise these opportunities for some multi-night astronomy. Leaving your own camping gear in the shipping container between visits can make Warwick visits an easy option.



Warwick Archers - Global Light Pollution Map <https://rb.gy/64141>



The site is a large scrubby block with tank water, kitchen, toilet, shower, and camping area facilities at the southern end. The camping area is a large mown grassed area just below the main facilities buildings. There is plenty of room there for a dozen, or more, campers.

Warwick Archers have slashed two reasonably level areas, suitable for telescope setup, towards the northern end of the block. Over time, BAS aims to prepare multiple levelled pad areas (grassed) to make telescope setup easier.

The Archers have a large kitchen pavilion area that is available to BAS. Members may setup overnight beds in this facility if they wish.

As of October 2023, the Archers facility does not have access to 240v power. However, they do have a small generator that powers a rainwater pump allowing quick showers (with gas hot water too). Longer term plans are being progressed to replace the generator with a solar battery system.



Kitchen pavilion

Warwick Archers have also made available to BAS a 20-foot shipping container and two single beds. Members may leave their own camping gear in the container rather than transport for each visit. Members may also choose to sleep in the container on cold nights, or even in the kitchen pavilion area, or the large camp ground area.

BAS has booked specific New Moon weekend dates with Warwick Archers. However, our members may utilise the site on any day of the year, provided it does not clash with a larger archery event. Email the BAS President for permission to visit the site on non-BAS event dates.

The gate to the facility is normally locked. The access code can be provided upon request.



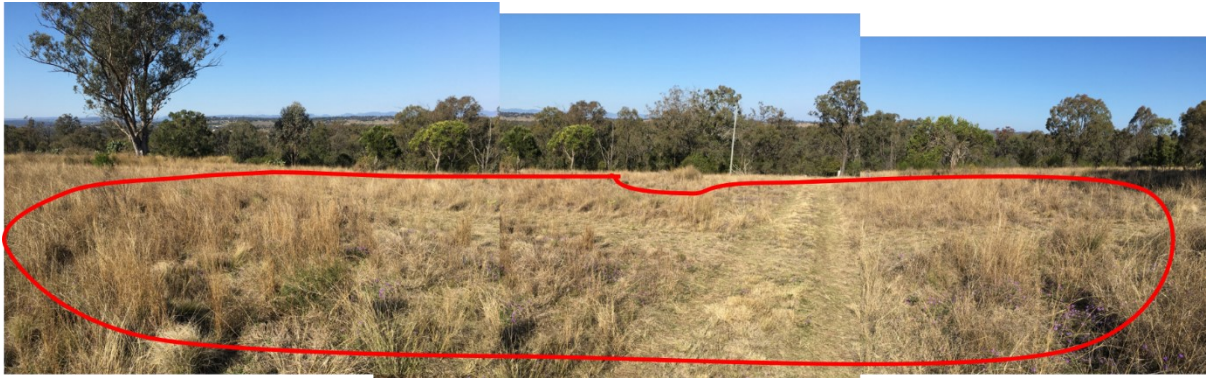
One of two single beds made available to BAS by Warwick Archers



Loo and shower facilities



A small section of the camping area



Scope Setup Area 2 - before mowing (the much smaller of the two setup areas)

