

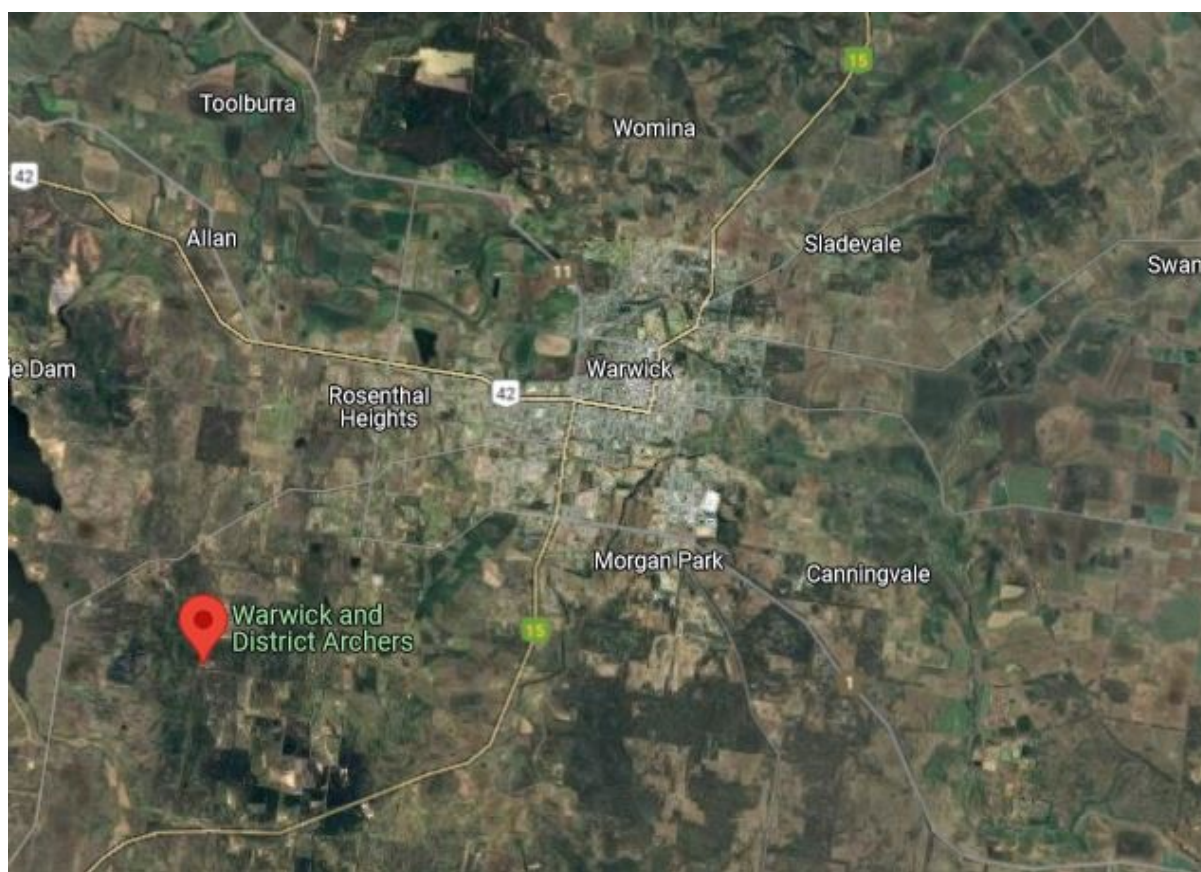
Warwick & District Archers – BAS Dark-Sky Site

Ford Road, Rosenthal Heights, Warwick: <https://maps.app.goo.gl/Ca91xUHiw9crQom77>

At the invitation of the Warwick and District Archers (WDA), BAS has been added to the 50ha site lease the WDA has with the land owner, Southern Downs Regional Council. BAS can now utilise the archer's Ford Road site and facilities for astronomy nights. This also allows BAS to proceed with developing facilities to support astronomy and our visiting members.

The site is a 15-minute drive south-west of Warwick. Driving the New England Highway heading south to Stanthorpe, turn right onto Glen Road at the Warwick Hospital, after about 7km, turn left onto Ford Road. Or access from the New England Highway via Kingsleigh Road, about a 5minute drive further south along the highway from the Glen Road/hospital intersection.

Google Maps suggests about a 2hour drive time from Indooroopilly to the WDA site if peak hour traffic is avoided. (As a bonus, the Warwick Mobil petrol station on Wood Street is known for substantially cheaper fuel than Brisbane.)



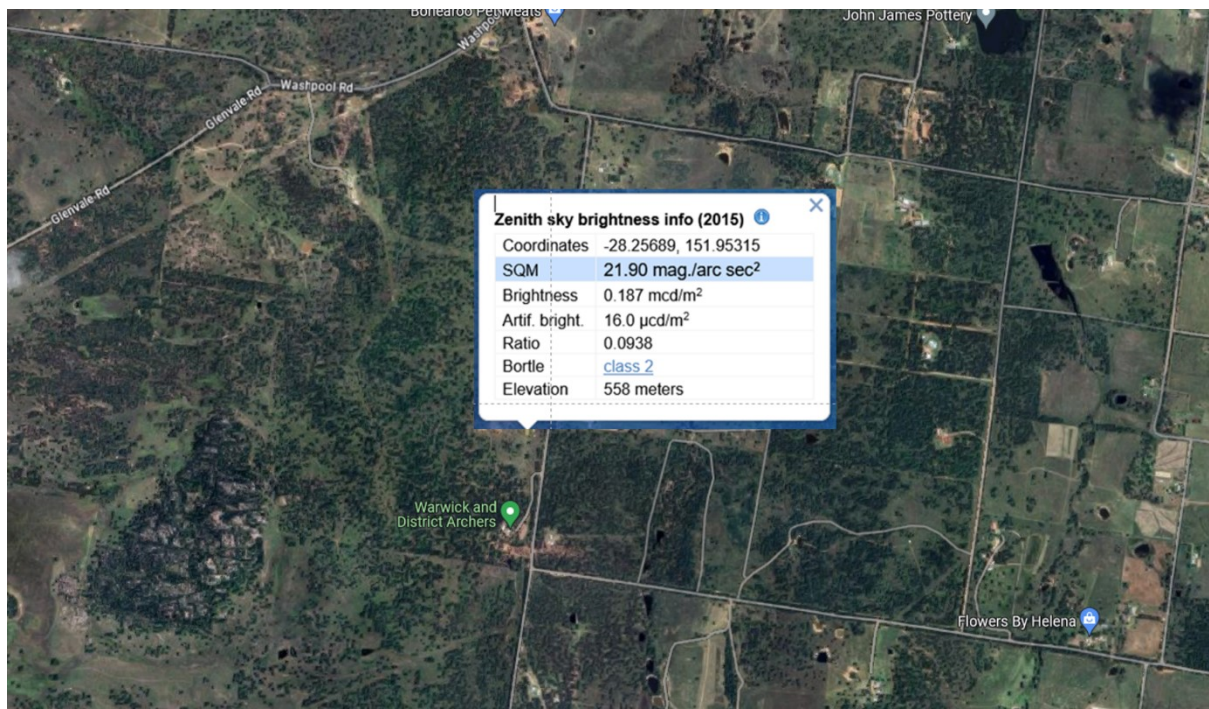
Google maps link: <https://maps.app.goo.gl/Ca91xUHiw9crQom77>

The Global Light Pollution Map <https://rb.gy/64141> classifies the Warwick Archers site as Bortle Class 2 with artificial light incidence of $16.0 \mu\text{cd}/\text{m}^2$. Our other main observing site at

Calvert Aeromodellers is assessed as Class 3 with artificial light of $39.8 \mu\text{cd}/\text{m}^2$. The Maleny Golf Club site is Class 4 with artificial light of $64.7 \mu\text{cd}/\text{m}^2$.

There is a very tolerable bubble of light to the east over Warwick, however the sky to the south, west, and even north towards Toowoomba, is very dark. The site is excellent for visual astronomy and astrophotography.

Due to the significant driving distance from Brisbane, BAS will aim to conduct multi-night weekends at the site, covering Friday, Saturday, and Sunday nights. BAS members are encouraged to utilise these opportunities for some multi-night astronomy. Leaving your own camping gear in the on-site 20-foot shipping container between visits can make Warwick visits an easy option.



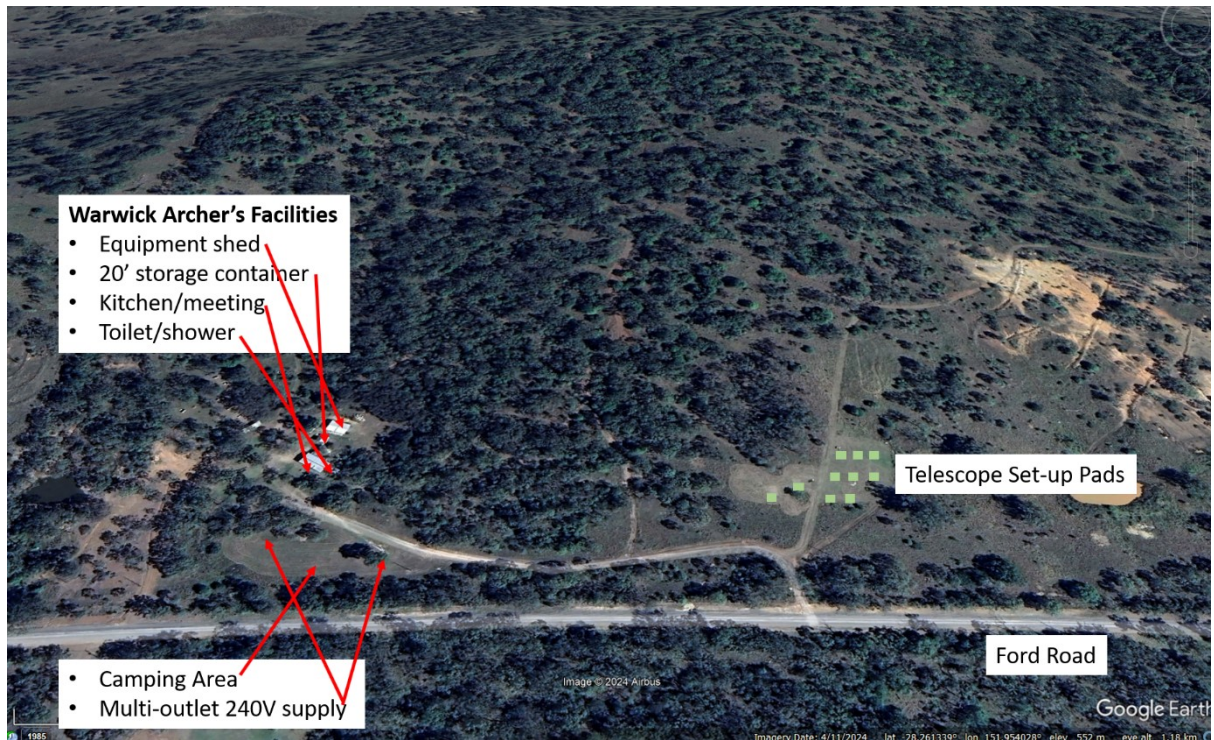
Warwick Archers - Global Light Pollution Map <https://rb.gy/64141>

The WDA entrance is on Ford Road at the southern end of the WDA block and adjacent to the Kingsleigh Road intersection with Ford Road. The gate has a coded padlock installed by WDA. BAS is provided with the code. Contact the BAS President president@bas.asn.au for the current code.

The WDA site is a large scrubby block with WDA main shed, tank water, kitchen, toilet, shower, and camping area facilities at the southern end. The camping area is a large mown grassed area just below the main archer's facilities. There is plenty of room there for a dozen, or more, campers.

As of June, 2025 the WDA facilities are now connected to 240V power. This means the main facility have – lighting for the main shed and toilets/showers; multiple 240v outlets for battery charging; refrigerator to store food and drink; microwave oven; two 240V power boxes with multiple outlets in the camping ground adjacent to the main facilities. WDA has

also made a 20' shipping container available to BAS. Members may store camping gear. However, it is probably too hot to store delicate astronomy equipment.



The WDA facilities are located at the southern end of the site while BAS telescope pads are at the northern end.



The WDA main shed. The northern half is lock-up and has the refrigerator and microwave etc.

The Archers main shed is available to BAS. Members may setup overnight beds in this facility if they wish.

Warwick Archers have slashed a large area, suitable for telescope setup, towards the northern end of the block. BAS has created about 12 gravelled and levelled telescope setup pads. Seven of the pads have tennis court matting material to make telescope setup and use more comfortable.



Levelled telescope setup pads with matting

Warwick Archers have also made available to BAS a 20-foot shipping container and four single beds with mattresses. Members may leave their own camping gear in the container rather than transport for each visit. Members may also choose to sleep in the container on cold nights, or even in the WDA kitchen/dining area, or the large adjacent camping ground area.

BAS has booked specific New Moon weekend dates with Warwick Archers. However, our members may utilise the site on any day of the year, provided it does not clash with a larger archery event. Email the BAS President for permission to visit the site on non-BAS event dates.

The Ford Road entrance gate to the WDA facility is normally locked. The access code can be provided upon request.



One of four single beds, with mattress, made available to BAS by Warwick Archers



Hot & cold running water showers - male & female



Loo and shower facilities



A small section of the camping area adjacent to the WDA facilities. Two 240V power outlet boxes are in the camping area. The southern box (located in the trees above) has 4 outlets. The other power box, at the northern end of the camping ground has 2 power outlets.

In early 2025 BAS secured a grant to construct a 6mx15m steel shed on the hill about 50m above the telescope setup area. In June 2025 Southern Downs Regional Council issued a Building Permit for construction. It is hoped the shed may be ready for use by late 2025. The shed will be available for equipment storage and overnight shelter.

The levelled area is currently available to as a convenient camping site close to the telescope area.



Levelled site for a proposed BAS storage shed

Now that 240V power is connected, the WDA site is a comfortable site for dark-sky multi-night astronomy events. BAS members are encouraged to utilise this facility 365 days.

Visit Procedure and Cost

BAS needs to inform WDA if we will have any members/visitors visting the site. 24 hours' notice is preferred.

If you plan to visit, please contact the BAS President; SMS is best. You will be provided with the current access code for the Ford Road gate combination lock. Your visit plan will be relayed to the

WDA President. Additional information on keys to the WDA kitchen, shipping container and other access and site usage information will also be provided to you.

A per-night facility fee is payable by astronomy visitors.

BAS Members: BAS members pay just \$10/night.

Non-BAS Members: Non-BAS members pay \$10/night plus a single additional \$10 charge (Non-member stays 1 night and pays \$20; Stays 2 nights and pays \$30; etc.)

Please note: We charge a little more than the base \$10 charge (for example, \$10.26 etc) to cover commission and fees levied by Square and credit card companies.)

Either scan the QR code or click through to our Square payment page: <https://square.link/u/vXHhilta>



At the end of each month, BAS transfers collected fees to the Warwick & District Archers. Your fee payment helps the Archers cover some of their costs for site leasing, mowing, electricity, gas, building construction, maintenance and insurance, rubbish removal, vegetation management, tractor, and mower costs, and much more. Payments of more than just the base applicable fee are welcomed.